

#TheWizAtTheWells

THE WIZ



NSU
NORFOLK STATE UNIVERSITY
NSU THEATRE COMPANY

VIRGINIA
STAGE
COMPANY
AT THE
Wells Theatre

Perry's Will Said a Lot About Him.

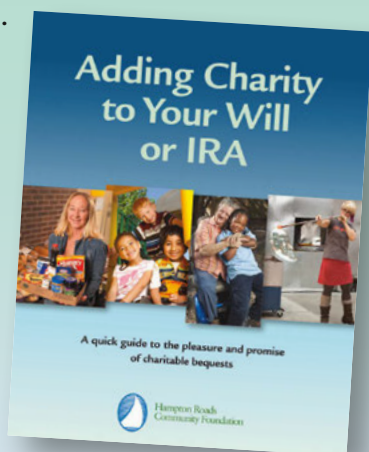
What Does *Your* Will Say About You?



Virginian-Pilot publisher Perry Morgan died in 1999. But today he and his late wife Bunny, provide college scholarships for 49 area students and help Virginia Gentleman Foundation build a Virginia Beach adventure camp for people with disabilities.

Perry and Bunny will forever help people in Hampton Roads because of their charitable bequest.

Help write our region's future through your generosity. Learn how at (757) 622-7951 or leaveabequest.org.



Hampton Roads
Community Foundation

www.leaveabequest.org • (757) 622-7951

ABOUT VIRGINIA STAGE COMPANY

Virginia Stage Company is Southeastern Virginia's leading non-profit theatre destination, serving an audience of over 70,000 patrons annually, both at the Wells Theatre and throughout the community. Our mission is to "enrich, educate and entertain the region by creating and producing theatrical art of the highest quality."

Virginia Stage Company is one of the country's foremost regional theatre companies. Shows receiving their world premieres at Virginia Stage regularly include stories of special regional interest that we commission through our *American Soil New Plays Program* and musicals on their path to the Great White Way that we present in partnership with Broadway producers. VSC productions are created on site and from the ground up—costumes to sets, sound to lighting—especially for our unique Hampton Roads audience.

Virginia Stage Company connects the Hampton Roads community through initiatives that enrich lives and encourage artists and audiences for the future. Our education and community programming strives to reflect the needs of the communities we serve and to advocate for arts integration and experiences that promote literacy, character development, and critical thinking in the next generation of artists and audiences.

Virginia Stage Company is owned by our community and relies heavily on the generosity of individuals, corporations, municipalities and charitable foundations in reaching its mission. For their support and for the invested enthusiasm of our community, we are deeply grateful. To find more information on becoming involved and supporting professional theatre in our region, please visit us at vastage.org.



Unlimited digital service included with any print subscription.
Get complete local entertainment news 24/7.
CALL (757)247-4800 TO SUBSCRIBE TODAY.

Daily Press

Supporting the arts in Hampton Roads

Grow Forward

CPAs & Advisors with Your Growth in Mind

No matter where you want to take your business, you need a resourceful and innovative partner to steer you in the right direction. Let Cherry Bekaert guide you forward to your growth destination.



*We are proud to support the
Virginia Stage Company.*



Your guide forward

cbh.com

***Find out how we can be your
guide forward***

222 Central Park Ave.
Suite 1400
Virginia Beach, VA 23462
757.456.2400

Atlanta | Charlotte | Hampton Roads | Miami | Raleigh | Richmond | Tampa | Washington D.C.

THE WIZ

TABLE OF CONTENTS

- 3** About Virginia Stage
- 7** *The Wiz*
- 9** Cast List
- 11** Musical Numbers
- 12** Through the Director's Eye
- 15** Cast Bios
- 24** Creative Team
- 28** Education and Community Engagement Programs
- 33** Board of Trustees
- 35** Corporate & Foundation Support
- 37** VSC Staff
- 41** Senior Staff Bios
- 44** Donor Contributions
- 49** Virginia Stage Associates

Virginia Stage Company gratefully acknowledges the leadership and support of the following area municipalities, state and national arts agencies:

NORFOLK ARTS



ART WORKS.
arts.gov

**VIRGINIA
BEACH**

ARTS AND HUMANITIES COMMISSION



CHESAPEAKE
**FINE
ARTS**
COMMISSION



Newport
Arts News
Commission

INTRODUCING

THE STUDENT FREEDOM PASS

THE STUDENT FREEDOM PASS IS A FARE CARD THAT GIVES
HAMPTON ROADS YOUTH 17 YEARS OLD AND YOUNGER
UNLIMITED FREE RIDES ON LIGHT RAIL, BUS, AND FERRY.

LEARN MORE AT GOHRT.COM/STUDENTFREEDOM



HAMPTON ROADS TRANSIT

gohrt.com

PRODUCING ARTISTIC DIRECTOR
Tom Quaintance



ASSOCIATE PRODUCER
Patrick Mullins



PRODUCING ARTISTIC DIRECTOR
Anthony Stockard

and

CHERRY BEKAERT CPAS & ADVISORS

present

The Wiz

BOOK BY WILLIAM F. BROWN

MUSIC AND LYRICS BY CHARLIE SMALLS

FROM THE STORY "THE WONDERFUL WIZARD OF OZ" BY L. FRANK BAUM

SCENIC DESIGNER
Korey Washington

COSTUME DESIGNER
Jeni Schaefer

LIGHTING DESIGNER
Jason Amato

SOUND DESIGNER
Danny Erdberg

MUSIC DIRECTOR
Roy Samuel George

CHOREOGRAPHER
Kavin Grant

PRODUCTION STAGE MANAGER
Matthew G. Marholin

DIRECTED BY

Patrick Mullins & Anthony Stockard

Virginia Stage Company is funded in part by grants from The Business Consortium for Arts Support, Virginia Commission for the Arts, the City of Norfolk and the National Endowment for the Arts.
"The Wiz" is presented by special arrangement with SAMUEL FRENCH, INC.

SPEND ALL DAY,
EVERY DAY,
IN FIRST CLASS.



RIVER TOWER COMING 2019

Here, luxury comes with a true life plan.
Reserve your place today.

**HARBOR'S
EDGE**

One Colley Ave., Norfolk, VA 23510 (757) 544.9028 harborsedenorfolk.com



CAST LIST

Pit Singers	COCO DENT, TOBIN GAMBLE, LANCE HAWKINS II, SOLOMON LANGLEY, MEREDITH NOËL, KAI B. WHITE, STARLET WINDHAM
Aunt Em, Glinda	NICOLE POWELL *
Toto	AVA (Cockapoo), CHICO (Pomeranian), OREO (Pit Bull Mix)
Dorothy	ALANA HOUSTON
Uncle Henry	ANTHONY MARK STOCKARD *
Lead Tornado	ROBERT GARRIS
Tornado Dancers	SAVANNA BLANTON, DJIMON ARMANI DANIELLE BROWN, ZIPPORAH GATLING †, TIYANA PETERS, MY'ASIA PRICE-CLEARE, BRIESHA RADER, DIYEA THOMPSON
Munchkins	PHILLIP AMOFAH JR., SAKEYI FREEZE, TIFFANY GREGORY, TAJLEED HARDY, JAQUAN JONES
Addaperle	MEREDITH NOËL
Yellow Brick Road	DERRICK MOORE, ESAIAS ROPER, MA'RAH WILLIAMS, JA'KEETRIUS WOODS
Scarecrow	MATTHEW JACKSON
Crows	COREY BROWN, ROBERT GARRIS, JAQUAN JONES, ANTONIO MITCHELL
Tin Man	JONATHAN COOPER
Lion	DARIUS NELSON
Kalidah Queen	SAKEYI FREEZE
Kalidahs	PHILLIP AMOFAH JR., LEVONTE HERBERT, CHRISTOPHER LINDSAY, TERRANCE LIVINGSTON JR., ANTONIO MITCHELL
Poppies	DJIMON ARMANI, DANIELLE BROWN, TIYANA PETERS, MY'ASIA PRICE-CLEARE, BRIESHA RADER
Field Mice	COREY BROWN, TAJLEED HARDY, JAQUAN JONES
Gatekeeper	RICK FLOWERS
Emerald City Citizens	DJIMON ARMANI, KEEAJAH BALDWIN, SAVANNA BLANTON, SAKEYI FREEZE, ROBERT GARRIS, ZIPPORAH GATLING †, TIFFANY GREGORY, ANTONIO MITCHELL, DERRICK MOORE, TIYANA PETERS, MY'ASIA PRICE-CLEARE, BRIESHA RADER, ESAIAS ROPER, DIYEA THOMPSON, MA'RAH WILLIAMS
The Wiz	INDYA JACKSON
Evillene	LAIONA MICHELLE *
Lord High Underling	TAJLEED HARDY
Winkies	PHILLIP AMOFAH JR., DJIMON ARMANI, SAVANNA BLANTON, DANIELLE BROWN, ZIPPORAH GATLING †, TIYANA PETERS, MY'ASIA PRICE-CLEARE, BRIESHA RADER, DIYEA THOMPSON, MA'RAH WILLIAMS
Soldier Messenger	LEVONTE HERBERT
Lead Winged Monkey	DERRICK MOORE

(Continued on page 10)

CAST LIST

Winged Monkeys COREY BROWN, ROBERT GARRIS,
CHRISTOPHER LINDSAY, ANTONIO MITCHELL
Glinda's Quadlings CHRISTOPHER LINDSAY, TERRANCE LIVINGSTON JR.,
DERRICK MOORE

Understudies:

For Dorothy: JA'KEETRIUS WOODS, For Scarecrow and Tinman: ESAIAS ROPER

*Female Swing: JORDAN DUNLAP *, Male swing: ESAIAS ROPER*

Production Stage Manager MATTHEW G. MARHOLIN *
Assistant Stage Manager ALICIA MORRIS
Dance Captain JORDAN DUNLAP *
Associate Choreographers JORDAN DUNLAP *, ROBERT GARRIS

* Member of Actors' Equity Association the Union of Professional Actors and Stage Managers in the United States

† Appearing Courtesy of Actors' Equity Association

MUSICIANS

Conductor/Keys 1 ROY SAMUEL GEORGE
Assistant Music Director/Keys 2 RODNEY KING
Drums GREG CHANDLER
Percussion TAU CHATMAN
Lead Guitar JASMINE ADKINS
Bass DESHAWN MAYS
Trumpet TEVANTE SWANSTON
Trombone JOHN HILL
Sax MICHAEL MINIX
Flute/Reeds VINCENTTE JARRETT

MUSICAL NUMBERS

ACT 1

<i>Overture</i>	Pit Singers
<i>The Feeling We Once Had</i>	Aunt Em
<i>Tornado</i>	Pit Singers
<i>He's the Wiz</i>	Addaperle and Munchkins
<i>Soon as I Get Home</i>	Dorothy
<i>Born On The Day Before Yesterday</i>	Scarecrow
<i>Ease On Down the Road</i>	Yellow Brick Road and Dorothy
<i>Slide Some Oil to Me</i>	Tin Man
<i>Ease On Down the Road (Reprise)</i> ...	Dorothy, Scarecrow, Tin Man, and Yellow Brick Road
<i>Mean Ole Lion</i>	Lion
<i>Ease On Down the Road (Reprise)</i>	Dorothy, Scarecrow, Tin Man, Lion, and Munchkins
<i>Be a Lion</i>	Dorothy and Lion
<i>Emerald City Dance</i>	The Company
<i>Meet the Wizard</i>	The Wiz
<i>What Would I Do If I Could Feel</i>	Tin Man

ACT 2

<i>Entr'acte</i>	Pit Singers
<i>Don't Nobody Bring Me No Bad News</i>	Evillene
<i>Funky Monkeys</i>	Evillene
<i>Back at the Witch's Castle</i>	Pit Singers
<i>Everybody Rejoice (Brand New Day)</i>	The Company
<i>Who Do You Think You Are?</i>	Dorothy, Scarecrow, Tin Man, and Lion
<i>Believe in Yourself</i>	The Wiz
<i>Promenade</i>	Pit Singers
<i>Y'all Got It!</i>	The Wiz and the Company
<i>A Rested Body</i>	Glinda and the Company
<i>Believe in Yourself (Reprise)</i>	Glinda and the Company
<i>Finale</i>	Dorothy

There will be a **15-minute intermission**.

Please silence your cell phone and all other electronic devices.

Video and/or audio recording of this performance by any means whatsoever is prohibited by law.

Let us know what you thought!

Tag us @vastage or at vastage.org/feedback

THROUGH THE DIRECTOR'S EYE



First off, I must confess that I have never viewed any version of *The Wiz* in its entirety before working on this production.

That being said, I never thought that directing *The Wiz* would be such a touchy subject for me. Oz, witches, and silver slippers did not seem like a likely cause for such deep connection and introspection. However, the truth is “home” is a “place” that I know nothing about. Having been in foster care as a youth, the concept of family is amorphous and sharing a life-long history with someone is a concept that still eludes me.

When we meet Dorothy, “home” seems like a place that she too knows nothing about. For her, home is a place where her parents are absent and she feels like a burden to her aunt and uncle. As a result, we find her searching for a place in the world that feels both safe and real. It is not until she lands in Oz that she realizes everything she wanted was there in Kansas all along.

I hope that *Wiz* audiences are reminded about the importance of letting people know that they matter and are loved – and whether those people you hold dear are parents, kinfolk, or friends who became family, it doesn't really matter – as long as when they are around, it feels like home.

Speaking of home, it sure feels like it here at VSC. Our students at NSU have enjoyed working alongside and learning from professionals in many areas of theatre. This co-production has been such an eye-opening experience for all of our wonderful, hard-working and gifted students. To Patrick Mullins, my co-director on this production and the other half of the driving force behind the amazing NSU-VSC collaborations -- there truly are no words to describe my gratitude for all of the unbelievable opportunities you and VSC have afforded my students. To all of our new family at VSC, on behalf of the students and everyone at NSU, I say THANK YOU!

— Anthony Stockard

Follow Norfolk State University Theatre Company on Facebook, Instagram, and Twitter!

@nsutheatre

THROUGH THE DIRECTOR'S EYE

When people think of *The Wiz* they remember the incredible music, the movie with Michael Jackson and Diana Ross, the amazing costumes - but they forget that this iconic, culture-shifting show also took home 7 Tony Awards and ran for four years on Broadway - making it a success by all standards.

But what we now take for granted - that fun show about Dorothy and her friends bopping along to a sophisticated funk groove - had a rocky start. Critical response was tepid and sometimes inflammatory. Sales were slow. Closing notices were at the ready on opening night. But the greater public knew greatness when they saw it. Thanks to TV commercials and grassroots marketing, once the people knew the show was happening - they showed up. And *The Wiz* demonstrated that it should not be underestimated.



When Anthony Stockard of Norfolk State University and I were considering what we might work on together as a partnership production, we knew that *The Wiz* was possibly bigger than either of us. But that might be what made it a perfect choice. A show that perhaps NSU or VSC could do alone would be so much bigger together. I love working in non-profit regional theatre because I believe that HOW we make the work is as important as the work that we make. And the opportunity for us all to work together - professionals and students; actors and singers and dancers and musicians and craftspeople and designers from all over the country - on a piece that celebrates black excellence and centers on the idea of "home"?!?! What an amazing artistic process to be in. I am a blessed man to have had the opportunity to participate in this event.

I will forever be forever grateful to Professor Stockard and Norfolk State University Theatre Company for going on this journey with us here at Virginia Stage. I believe that partnerships like this are how we make Hampton Roads a more vibrant place. We can talk about partnerships all day long, but when we roll up our sleeves and work together day after day after day - that's when we start to find the "home" that many of us have been looking for all along. Thank you to this cast and crew for making Hampton Roads a little more home for me.

— Patrick Mullins



AMERICA'S #1
MOST NATIONALLY RECOGNIZED
HBCU THEATRE/DRAMA PROGRAM

**BACHELOR OF ARTS
CONCENTRATIONS IN**

THEATRE PERFORMANCE

THEATRE TECHNOLOGY

SCHOLARSHIPS AVAILABLE

www.nsu.edu/drama

CAST BIOS



PHILLIP AMOFAH, JR. (Munchkin/Kalidah/Winkie) Phillip is a junior Theatre Performance student at Norfolk State University from Woodbridge, Virginia. He has previously appeared in the Norfolk State University Theatre Company production of

Ruined.



DJIMON ARMANI (Tornado/Poppy/Winkie/Emerald City Citizen) Djimon is a freshman Theatre Performance student at Norfolk State University from Charlotte, North Carolina. She has previously appeared in the Norfolk State University

Theatre Company production of *Black Nativity*. Other credits include *Rent*, *Footloose*, *A Midsummer Night's Dream*, and *In the Heights*.



KEEAJAH BALDWIN (Emerald City Citizen) Keeajah is a junior Theatre Performance student at Norfolk State University from Norfolk, Virginia. She has previously appeared in the Norfolk State University Theatre Company productions of *Ruined* and

Black Nativity.



SAVANNA BLANTON (Tornado/Emerald City Citizen, Winkie) Savanna is a freshmen Fashion Design student at Norfolk State University from Fayetteville, North Carolina. She has previously appeared the Norfolk State University Theatre Company

production of *Black Nativity*.



COREY BROWN (Crow/Field Mouse/Monkey) Corey is a junior Theatre Performance student at Norfolk State University from Norfolk, Virginia. He has previously appeared in the Norfolk State University Theatre Company productions of *Black*

Nativity & Ruined. Other credits include *A Raisin in the Sun*, *Cat on a Hot Tin Roof*, and *Jitney*.



DANIELLE BROWN (Tornado/Poppy/Winkie) Danielle is a junior Nursing student at Norfolk State University from Los Angeles, California. She has previously appeared in the Norfolk State University Theatre Company productions of *Black*

Nativity & A Musical Tribute to Luther Vandross.



JONATHAN COOPER (Tin Man) Jonathan is a junior Theatre Performance student at Norfolk State University from Norfolk, Virginia. He has previously appeared in the Virginia Stage Company production of *A Raisin in the Sun* and the Norfolk State University

Theatre Company production of *Ruined*. Other credits include *Rent*, *Detroit 67'*, and *Black Nativity*.



COCO DENT (Pit Singer) Coco is a Norfolk State University alumna from Norfolk, Virginia. She has previously appeared in the Norfolk State University Theatre Company productions of *The Road Less Traveled*, *Dreamgirls*, *A Musical Tribute to*

Whitney Houston, *For Colored Girls...*, and *Black Nativity*. Other credits include *Herbert*

(Continued on page 16)

CAST BIOS (CONTINUED)

the Third, *The Magic & Music of Motown*, *American Menu*, *Contributions*, *Tambourines to Glory*, *Seven Guitars*, *Kansas City*, and *Ain't Misbehavin'*. She is the recipient of the NSU Theatre Company's 2015 *Best Lead Actress in a Musical*, 2015 *Leadership Award* and 2016 *Best Supporting Actress in a Musical* awards.



JORDAN DUNLAP

(Dance Captain/Female Swing) is thrilled to be making her VSC debut. Her credits include : National Tour : *Radio City Christmas Spectacular*, *CATS 30th Anniversary*. Regional Theatre : *Spamalot*, *Mary Poppins* (Dance Captain),

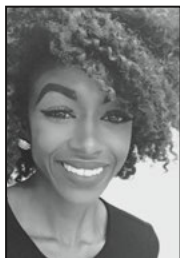
Legally Blonde (Serena, Associate Choreographer), *S'Wonderful* (Leslie), *CATS* (Sillabub), *How To Succeed..The Producers*, and *Ballet Memphis Company*. Thank you to Tom, Patrick, Anthony, and Kavin for this incredible opportunity.



RICK FLOWERS

(Gatekeeper) Rick is a senior Theatre Performance student at Norfolk State University from Richmond, Virginia. He has previously appeared in the Norfolk State University Theatre Company production of

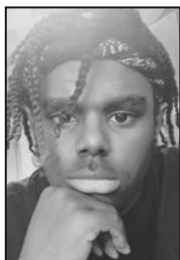
Ruined. Other credits include *The Wiz*, *A Fool for Love*, & *Cat on a Hot Tin Roof*.



SAKEYI FREEZE

(Munchkin/Kalidah Queen/Emerald City Citizen) Sakeyi is a junior Communications student at Norfolk State University from Virginia Beach, Virginia. She has previously appeared in the Virginia Stage Company production of *A Christmas*

Carol and the Norfolk State University Theatre Company productions of *For Colored Girls...*, *No Child*, and *Ruined*.



TOBIN GAMBLE (Pit Singer) Tobin is a freshman Theatre Performance student at Norfolk State University from Charlotte, North Carolina. He has previously appeared in the Norfolk State University Theatre Company production of *Black*

Nativity.



ROBERT GARRIS (Lead Tornado/Crow/Emerald City Citizen/Monkey) Robert is a sophomore Kinesiology student at Norfolk State University from Washington, D.C. He has previously appeared in the Norfolk State University Theatre Company

productions of *A Musical Tribute to Whitney Houston*, *A Musical Tribute to Luther Vandross*, and *Black Nativity*.



ZIPPORAH GATLING

(Tornado/Winkie/Emerald City Citizen) Zipporah is a junior Business Management student at Norfolk State University from New York, New York. She has previously appeared in the Norfolk State University Theatre

Company productions of *Black Nativity* and *A Musical Tribute to Luther Vandross*. She has graded the Broadway stage twice in the productions of *The Color Purple* & *The Lion King*. Other credits include *Grease*, *Little Shop of Horrors*, and *Leader of the Pack*.



TIFFANY GREGORY

(Munchkin/Emerald City Citizen) Tiffany is a Norfolk State University alumna from Portsmouth, Virginia. She has previously appeared in the Norfolk State University Theatre Company production of *Black Nativity*. Other credits

include *Seven Guitars*, *Tambourines to Glory*, *The Magic & Music of Motown*, and *The Magic*

THE WIZ

CAST BIOS (CONTINUED)

and *Music of Michael Jackson*.



TAJLEED HARDY

(Munchkin/Field Mouse/Lord High Underling) Tajleed is a freshmen Theatre Performance student at Norfolk State University from Stafford, Virginia. He has previously appeared in the Norfolk State University Theatre

Company productions of *Black Nativity* and *Ruined*.



LANCE HAWKINS II

(Pit Singer) Lance is a junior Theatre Performance student at Norfolk State University from Canton, Ohio. He has previously appeared in the Norfolk State University Theatre Company productions of *Choir Boy*, *A Musical Tribute*

to *Whitney Houston*, *Black Nativity*, and *Dreamgirls*.



LEVONTE HERBERT

(Kalidah/Soldier Messenger) Levonte is a sophomore Theatre Performance student at Norfolk State University from Richmond, Virginia. He has previously appeared in the Norfolk State University Theatre

Company productions of *Black Nativity* and *Ruined*.



ALANA HOUSTON

(Dorothy) Alana is an incoming freshman Theatre Performance student at Norfolk State University. She is currently in her senior year at Northeastern High School in Elizabeth City, North Carolina. She has previously

appeared in the Norfolk State University Theatre Company productions of *Black Nativity* and *A Musical Tribute to Luther Vandross*. Other credits include *13 The*

Musical, *The Music Man*, *To Kill a Mockingbird*, *Legally Blonde*, *Hairspray*, & *The Little Mermaid*.



INDYA JACKSON

(The Wiz) Indya is a junior Theatre Performance student at Norfolk State University from Chesapeake, Virginia. She has previously appeared in the Virginia Stage Company production of *A Christmas Carol* and the Norfolk State

University Theatre Company productions of *For Colored Girls...*, *A Musical Tribute to Luther Vandross*, *A Musical Tribute to Whitney Houston*, *No Child...*, *A Raisin in the Sun*, and *Ruined*.



MATTHEW JACKSON

(Scarecrow) Matthew is a junior Theatre Performance student at Norfolk State University from Newport News, Virginia. He has previously appeared in the Norfolk State University Theatre Company productions of *Black*

Nativity & *Choir Boy*.



JAQUAN JONES

(Munchkin/Crow/Field Mouse) JaQuan is a freshmen Theatre Performance student at Norfolk State University from Chesapeake, Virginia. He has previously appeared in Norfolk State University Theatre Company

productions of *Black Nativity* and *Ruined*.



SOLOMON LANGLEY

(Pit Singer) Solomon is a freshmen Theatre Performance student at Norfolk State University from Smithfield, Virginia. He has previously appeared in the Norfolk State University Theatre Company productions of

Choir Boy, *A Musical Tribute to Luther Vandross*, *Black Nativity*, and *Ruined*.

(Continued on page 18)

CAST BIOS (CONTINUED)



CHRISTOPHER LINDSAY (Kalidah/Monkey/Quadling) Christopher is a senior Theatre Performance student at Norfolk State University from Brooklyn, New York. He has previously appeared in the Virginia

Stage Company productions of *The Tempest* and *A Christmas Carol* and the Norfolk State University Theatre Company productions of *The Brothers Size*, *A Raisin in the Sun*, *Dreamgirls*, *Black Nativity*, *The Road Less Traveled*, and *Ruined*. He is the recipient of the 2016 Kennedy Center American College Theatre Festival's *Distinguished Performance by an Actor in a Play*.



TERRANCE LIVINGSTON, JR.

(Kalidah/Quadling) Terrance is a Norfolk State University alumnus from Suffolk, Virginia. He has previously appeared in the Virginia Stage Company production of *A Christmas Carol* and the Norfolk State University Theatre Company production of *Ruined*.



ANTONIO MITCHELL

(Crow/Kalidah/Emerald City Citizen/Monkey) Antonio is a senior Theatre Performance student at Norfolk State University from Norfolk, Virginia. He has previously appeared in the Norfolk State University Theatre Company

productions of *The Brothers Size*, *Ruined*, and *Black Nativity*.



LAIONA MICHELLE

(Evillene) is thrilled to return to Virginia Stage where she played Ida B. Well in *Constant Star* and Mayme in *Intimate Apparel*. Most recently she performed as Millie Wilkinson in the Broadway Bound

production of *Because of Winn Dixie*. Laiona made her Broadway debut as Nanna in *Amazing Grace*. Laiona has a long list of theater credits which feature her as both a leading and supporting character. Prior to joining the cast of *Amazing Grace* she was part of *The Book of Mormon* first national tour. In addition to her stage work, Laiona has also made appearances on network and cable television in Showtime's *Lift*, ABC's *All My Children*, NBC's *Law & Order* and *Law & Order: CI*, and most recently she worked on the upcoming Amazon series, *Sneaky Pete* (Bryan Cranston and Giovanni Ribisi) and the season finale of NBC's *The Blacklist*. Laiona is a graduate of Brandeis University (MFA). www.laionamichelle.com



DERRICK MOORE

(Yellow Brick Road/Lead Monkey/Quadling) Derrick is a senior Theatre Performance student at Norfolk State University from St. Louis, Missouri. He has previously appeared in the Virginia Stage Company productions of

The Tempest and *A Christmas Carol* and the Norfolk State University Theatre Company productions of *The Brothers Size*, *The Road Less Traveled*, *A Raisin in the Sun*, *Dreamgirls*, *Black Nativity*, *A Musical Tribute to Luther Vandross*, *No Child...*, and *Ruined*. He is the recipient of the 2016 NSU Theatre Company *Best Supporting Actor in a Musical* award.



DARIUS NELSON (Lion)

Darius is a graduate of the American Musical and Dramatic Academy from Norfolk, Virginia. He has previously appeared in the Norfolk State University Theatre Company productions of *Black Nativity* and *A Musical*

Tribute to Luther Vandross. His love of music and comedy was instilled in him by his mother, Mildred Rene Nelson, who passed last year.

CAST BIOS (CONTINUED)



MEREDITH NOËL

(Addaperle/Pit Singer) Meredith is a senior Theatre Performance student at Norfolk State University from Baltimore, Maryland. She has previously appeared in the Virginia Stage Company productions of *The*

Hampton Years and *Oliver Twist* and the Norfolk State University Theatre Company productions of *Lady Day at Emerson's Bar & Grill*, *A Raisin in the Sun*, *Dreamgirls*, *Black Nativity*, *A Musical Tribute to Whitney Houston*, *For Colored Girls...* and *Ruined*. She is the recipient of the NSU Theatre Company 2015 *Best Supporting Actress in a Play* and 2016 *Best Supporting Actress in a Musical* awards.



TIYANA PETERS

(Tornado/Poppy/Winkie/Emerald City Citizen) Tiyana is a sophomore Mass Communications student at Norfolk State University from Norfolk, Virginia. She is making her debut with the Norfolk State University Theatre

Company.



NICOLE POWELL

(Aunt Em/Glinda) Broadway: *Ragtime* (revival), *Hairspray*. National Tours: *South Pacific*, *Dream Girls*. Off-Broadway: *Sistas: the musical*, *Next to Normal*, *Central Avenue Breakdown*. Regional theaters: Papermill

Playhouse, Tuacahn Performing Arts, Pittsburgh Civic Light Opera, Actors Theatre of Louisville, Northshore Music Theatre, Kansas City's Starlight Theatre, Main State Music Theatre, Barnstormers Theatre. Film/TV: *Unbreakable Kimmy Schmidt*, *Blue Bloods*, *Are We There Yet?*, *Delocated*, *Spike Lee's Drop Squad*. Love to my Hero/Husband Ron. This performance is dedicated to my beautiful Aunt Juanita (Neatsie). www.nicolepowell.com



MY'ASIA PRICE-CLEARE

(Tornado/Poppy/Winkie/Emerald City Citizen) My'Asia is a sophomore Kinesiology student at Norfolk State University from Richmond, Virginia. She has previously appeared in the Norfolk State

University Theatre Company productions of *Black Nativity*, and *A Musical Tribute to Luther Vandross*.



BRIESHA RADER

(Tornado/Poppy/Winkie/Emerald City Citizen) Briesha is a junior Kinesiology student at Norfolk State University from Norfolk, Virginia. She has previously appeared in the Norfolk State University Theatre

Company productions of *Black Nativity* and *A Musical Tribute to Luther Vandross*.



ESAIAS ROPER

(Yellow Brick Road/Emerald City Citizen/Understudy for Scarecrow & Tin Man/Male Swing) Esaias is a senior Music Media student at Norfolk State University from Red Springs, North Carolina. He has previously

appeared in the Norfolk State University Theatre Company productions of *Choir Boy*, *Ruined*, *No Child...*, *A Musical Tribute to Luther Vandross*, *Dreamgirls*, and *Black Nativity*. He is the recipient of the 2016 NSU Theatre Company *Best Supporting Actor in a Musical* award.



ANTHONY MARK STOCKARD

(Uncle Henry) Anthony returns to VSC after appearing in *I Sing the Rising Sea* as Langston Hughes, *The Tempest* as King Alonzo,

(Continued on page 21)

W. Kamau Bell

Emmy-nominated comic and CNN host



June 10 at 8pm • Attucks Theatre

Ticketmaster.com | 800.745.3000 | Scope Arena Box Office



CAST BIOS (CONTINUED)

and the last two productions of *A Christmas Carol* as Jacob Marley (2016) and *The Ghost of Christmas Present* (2015). His most recent credits include TV/Film: *Surrogates* (with Bruce Willis) Off-Broadway: *Old Comedy...* at Classic Stage Company; Regional: *No Child...* (Connecticut Critics Circle Award Winner) at Hartford Theatreworks; *Intimate Apparel* at Wellfleet Harbor Actors Theatre; *The Three Musketeers* at Double Edge Theatre Company; *One Flew Over the Cuckoo's Nest* and *A Christmas Carol* at Berkshire Theater Festival; *The Taming of the Shrew*, *Coriolanus*, *Lilly's Purple Plastic Purse*, *Cat on a Hot Tin Roof*, and *The Four Spirits* at Alabama Shakespeare Festival. Anthony holds an M.F.A. in Theatre Arts from Brandeis University and a B.A. in Theater Arts from Alabama State University. He proudly serves as the Director of Virginia's most nationally recognized collegiate theatre program of the year and America's most nationally recognized HBCU theatre program of the year, Norfolk State University's Division of Drama.



DIYEA THOMPSON

(Winkie/Emerald City Citizen/Tornado Dancer) Diyea is a senior Exercise Science student at Norfolk State University from Richmond, Virginia. She has previously appeared in the Norfolk State University Theatre Company production of *Black Nativity*.



KAI B. WHITE (Dog Wrangler/Pit Singer) is thrilled to be back at VSC working with such an amazing cast! Her recent credits include *Godspell* at LTN, *Olympus On My Mind* and *Violet* with LTVB, *You Don't Own Me: A Tribute to Lesley Gore*

cabaret, and *Holidivas* with the Zeiders American Dream Theater, *Silence! The Musical* and *Mr. Burns: A Post Electric Play* with the Generic Theatre and Dionne in *Hair* at The Cumberland Theatre. She would like to thank her loving husband Nathan for constantly supporting her XOXO.



MA'RAH WILLIAMS

(Yellow Brick Road/Winkie/Emerald City Citizen) Ma'Rah is a senior Theatre Performance student at Norfolk State University from Stone Mountain, Georgia. She has previously appeared in the Norfolk State University Theatre Company production of *The Road Less Traveled*. Other credits include *A Motown Christmas*, *Mame*, *The Color Purple*, and *Rent*.



STARLET WINDHAM

(Pit Singer) Starlet is a freshmen Theatre Performance student at Norfolk State University from Chicago, Illinois. She has previously appeared in the Virginia Stage Company production of *A Christmas*

Carol and the Norfolk State University Theatre Company productions of *Black Nativity* and *Ruined*.



JA'KEETRIUS WOODS

(Yellow Brick Road/Dorothy Understudy) Ja'keetrius is a freshmen Theatre Performance student at Norfolk State University from Mobile, Alabama. She has previously appeared in the Virginia Stage

Company production of *A Christmas Carol* and the Norfolk State University Theatre Company productions of *Black Nativity* and *Ruined*.

 TOWNE BANK
presents

Stockley Gardens Arts Festival

To Benefit Hope House Foundation

OCTOBER 15 & 16, 2016

MAY 20 & 21, 2017

Works From More Than 135 artists • Live Music

Delicious Food • Fun Children's Activities

For information, visit StockleyGardens.com

 Miller's

 Imancon
Since 1983

 CAPITAL
GROUP

 gsARTS
The Governor's School for the Arts

Premiere Arts Training for High School Students

Dance

Visual Arts

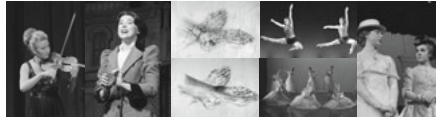
Vocal Music

Theatre & Film

Musical Theatre

Instrumental Music

creativity community collaboration



Visit our Brand New Building!
254 Granby Street, Norfolk
www.gsarts.net 757.451.4711

FACEBOOK

Twitter @TheGovSchl

Instagram @govschool

NORFOLK Chamber Consort

Forty Eighth Season

Program I

Exploring Albinoni

Featuring the winner of the 2015
Lisa Relaford Coston Voice Competition
Monday, October 3, 2016
Christ and St. Luke's Church 7:30 PM

Program II

Northern Stars: Grieg, Sibelius and Nielsen

Monday, November 21, 2016
Guest Artist – Emily Stauch, Soprano
Chandler Recital Hall
7:30 PM

Program III

Boboland

F. Ludwig Diehn Series
in cooperation with the Norfolk Chamber Consort
Guest Artist – Kevin Bobo, Marimba
Monday, February 27, 2017
Chandler Recital Hall
8:00 PM

Program IV

Two Rivals: Prokofiev and Shostakovich

Monday, April 17, 2017
Chandler Recital Hall
7:30 PM

The Music of STAR WARS

Thursday, May 4, 2017 | 7:30 PM
Chrysler Hall, Norfolk

May the 4th be with you!



Tickets start at \$25
RESERVE THE BEST SEATS NOW!
VirginiaSymphony.org | 757.892.6366

Sponsored by **Bank of America** 

CREATIVE TEAM

PATRICK MULLINS (Director/Associate Producer) is the Associate Producer at Virginia Stage Company. Patrick's personal adaptation and directorial work explores where classical texts intersect with current community issues. Recent projects include: *Oliver Twist*, *The Taming of the Shrew*, a synth-pop fantasia mixing Shakespeare's text and the music of Jacki Paoella, *Swingtime Salute* on the deck of the *USS Wisconsin*, *Honky Tonk Angels* and *The Odd Couple* at The Wells Theatre. For three years he has worked with Fest Events in producing *The Midsummer Fantasy Festival* - an immersive Shakespearean festival/visual art installation/performance event in Town Point Park. In addition to work at Virginia Stage Company, he has recently directed shows at Capital Repertory Theatre in Albany, NY and Ensemble Theatre Company in Santa Barbara, CA. Productions he has created for touring and young people include a video heavy *Romeo and Juliet* that integrated area high school students with professional actors, an R&B fueled tour of *Julius Caesar*, and a reworking of *A Christmas Carol* that celebrated the music and instruments of Dickens' period. A veteran high school teacher of seven years, Patrick holds an MFA from the University of South Carolina and is an adjunct professor at Old Dominion University. In 2010 he was recognized by the Hampton Roads Cultural Alliance with the Bettie Minette Cooper Arts Educator award. www.patrickkmullins.com

ANTHONY STOCKARD (Director/Director of Drama & NSU Theatre Company) Professor Anthony Stockard proudly serves as the Director of Virginia's most nationally recognized collegiate theatre program of the year and America's #1 Most Nationally Recognized HBCU Theatre & Drama Program of the Year, the NSU Division of Drama. He is also completing his third year as Director of the award-winning NSU Theatre Company. Since his arrival, the drama and theatre programs at NSU have gained historic national recognition and acclaim and record-breaking audience attendance. The most recent honors received were national awards from the Kennedy Center American College Theatre Festival for *Distinguished Production & Performance Ensemble* and *Distinguished Performance by an Actor in a Play* for the production *The*

Brother's Size. The production beat out more than 1,300 productions that were entered in the festival and involved more than 200,000 students nationwide.

He is a presidentially appointed NSU Honors College Senior Fellow and is the recipient of the College of Liberal Arts' *2015 Certificate of Achievement*, NSU Theatre Company's *2016 Outstanding Dedication & Service Award* and NSU Student Government Association's *2016 Honor & Appreciation Award*.

Anthony is the former Producing Artistic Director of Aldridge Repertory Theatre in Birmingham, Alabama. His work with the company garnered him inclusion in the 2009 edition of *Who's Who in Black Birmingham* for community service and arts leadership. The Kennedy Center American College Theatre Festival has honored him with multiple Meritorious Achievement Awards for Excellence in Directing for his productions of *The Brothers Size*, *Black Nativity*, *Broke-ology* and *The Color Purple*.

Anthony has directed more than 60 productions for professional and university stages. He holds memberships and affiliations with the Stage Directors & Choreographers Society, Actors Equity Association, Screen Actors Guild, The Association for Theatre in Higher Education and The Society of American Fight Directors. He currently sits on the boards of Region IV of the Kennedy Center American College Theatre Festival, Cloverdale Playhouse in Montgomery, Alabama and Virginia Theatre Conference. He holds a M.F.A. in Theatre Arts from Brandeis University and a B.A. in Theatre Arts from Alabama State University. www.nsu.edu/drama

KOREY WASHINGTON (Set Design) of Culver City, California has designed environments and scenery for award shows, special events, theatre, film, and tours for over 23 years. Mr. Washington has presented his design work in over 50 venues, arenas and theatres around the country including the Nokia Theatre, The Kennedy Center, Los Angeles Theatre Center, The Alliance Theatre, The Dallas Theatre Center and the Universal Amphitheater to name a few. He has worked as a Production Designer for many popular and successful productions including *Kevin*

CREATIVE TEAM (CONTINUED)

Hart: What Now? Concert Movie, Versus and Flow, 365 Black Awards, The Neighborhood Awards, Shaquille O'Neal's All Star Comedy Jam, The Carbonaro Effect, MTV's Teen Wolf, The Kings of Comedy and The House of Payne for TPS Studios. Mr. Washington has received his B.A. from Morehouse College and the MGA from the University of Georgia in Scenic Design Technology. Mr. Washington is the owner of Production Strategies and Design Group, a full service production design firm and The Collective Group, a marketing and couture event company. Mr. Washington is pleased and honored to be married to Tracey for 26 years and the father to Clark, Jason, and Andrew, the inspiration in his life.

JENI SCHAEFER (Costume Design) is Virginia Stage Company's Resident Costume Designer and Costume Shop Manager, as well as the Costume Instructor at the GSA's Theatre Department. She is celebrating her 15th season with Virginia Stage. Regional credits include: *A Christmas Story at The Arkansas Rep, The Hound of the Baskervilles at The Hangar Theatre, Always Patsy Cline at PCPA TheatreFest, Tom Jones, In the Book of and Under Six at Florida Studio Theatre*. VSC productions to name a few: *Peter and the Starcatcher, All My Sons, Grounded, The Tempest, The Great Gatsby, The Comfort Team, The Fantasticks, Death of a Salesman, Red, Radio Golf, A Raisin in the Sun, Around the World in 80 days, Wit, Crowns, Billy Bishop Goes to War, Hank Williams List Highway, The Elephant Man, Of Mice and Men, A Christmas Carol and To Kill a Mocking Bird*. Jeni Schaefer holds a Master of Arts in Communication/Theatre in Costume Design from Wichita State University and resides in Chesapeake, VA, with her amazing husband, Tony, and their two beautiful children, Sara and Ethan.

JASON AMATO (Lighting Design) His career has spanned 25 years, designing over 500 shows, including thought provoking, world premiere plays by Steven Dietz, Suzan-Lori Parks and Anna Deavere Smith and iconic musicals such as: *Ragtime, Tommy, Next to Normal and Hairspray*. In addition, Blue Lapis Light's site specific aerial dance has always been some of his favorite work. His work has been seen off-Broadway with Austin Shakespeare's Anthem, at the Baryshnikov Arts

Center, NYC. He has toured internationally, designing dance at Jacob's Pillow, Lincoln Center, the Smithsonian and the National Theatre in Taipei, Taiwan. Jason has received 40 regional awards for his lighting in shows. The Austin Chronicle honored him with "Best Lighting Design on a Shoe String" in 1995. In 2002 he was honored with "Best Dazzler" in the Chronicle's Critics' poll. In 2008, Jason received the "Outstanding Contribution to Austin Theater" award from Austin Circle of Theaters. And in 2012 The Kennedy Center recognized Jason's work on *Eurydice* at Simpson College, Iowa. www.jasonamato.com

DANIEL ERDBERG (Sound Design) VSC: *A Christmas Carol, The Tempest, Taming of the Shrew, The Fantasticks, Red, The Last Five Years; BROADWAY (ASSOCIATE): Significant Other; Violet; The Glass Menagerie; The Nance* (Sound Design Tony Award); *The Heiress; A Streetcar Named Desire; OFF-BROADWAY: Time it Was* with Bill Irwin, *Fall for Dance Festival* (City Center); *Rock and Roll Refugee, Love/Sick* (Royal Family); *The Last Cargo Cult, Drunk Enough to Say I Love You* (Public Theater); *Ordinary Days* (Roundabout); *Golden Boy* (59E59); *Maggie* (Amas-Audelco Nom.); REGIONAL: Geva, Metrostage, Arena Stage, Merrimack Rep, ACT, Milwaukee Rep, Longwharf, Theater by the Sea, Northshore Musical Theater; INTERNATIONAL: *Salsa Mambo Cha Cha Cha* (Havana): *Dreamgirls* (US Tour, Seoul, Korea); *White Christmas* (Toronto); EDUCATION: Northwestern University.; As a director, his work has appeared at HERE, Dixon Place, The 4x4 Festival, Barrington Stage and Theaterworks USA. Proud member of USA829, IATSE and SDG.

MATTHEW G. MARHOLIN (Production Stage Manager) is happy to be back at Virginia Stage Company for his eighth season. His work includes Artistic Director for Cirque du Soleil's production of *Alegria* in South America. His PSM credits include Broadway and National Tours for *Blood Brothers* starring Petula Clark and David Cassidy; *South Pacific* starring Robert Goulet; *Jekyll & Hyde; Smokey Joe's Café; Camelot* starring Robert Goulet; *A Few Good Men; Grease; Parade; The Wiz* starring Stephanie Mills and the World Premiere of Frank Wildhorn's *Camille Claudel* starring Linda

CREATIVE TEAM (CONTINUED)

Eder. International tours include *Porgy and Bess*, *Carmen Jones*, *tick, tick...BOOM!* and *Sophisticated Ladies*. To date, Matt's work has taken him to 27 countries.

ADDITIONAL SHOW STAFF

Assistant Stage Manager Keyiera Douglas
 Make-up Design Brittany Lamb
 Make-up Assistant Nicholas Bennett
 Scenic Painter Shawn Crawford
 Audio Engineer Charles Owrey
 Audio Technician J.C. Nigh
 Audio 2 Brando Lindsay
 Costume Shop Amelia Martinez,
 Suzette Martinez, Katelyn Jackson
 Dog Wrangler Kai B. White
 ASL Interpreters Sabrina Smith,
 Debbie North



The Director is a member of the Society of Stage Directors and Choreographers, Inc., an independent labor union.



This Theater operates under an agreement between the League of Resident Theatres and Actors' Equity Association, the Union of Professional Actors and Stage Managers in the United States.



The scenic, costume, lighting and sound designers in LORT Theaters are represented by United Scenic Artists.

9/9/16 10/2/16 GODSPELL MUSIC & LYRICS BY STEPHEN SCHWARTZ BOOK BY JOHN MICHAEL TEBELAK	11/4/16 11/27/16 PLAZA SUITE BY NEIL SIMON
1/13/17 2/5/17 THE FARNSWORTH INVENTION BY AARON SORKIN	CELEBRATING 90 SEASONS 2016/2017 The Little Theatre of Norfolk
	3/10/17 4/2/17 NOISES OFF BY MICHAEL FRAYN
CHICAGO MUSIC BY JOHN KANDLER LYRICS BY FRED EBB BOOK BY FRED EBB & BOB FOSSE	
5/19/17 6/11/17	
757.627.8551 • LTNONLINE.ORG	
The Little Theatre of Norfolk	
801 Claremont Ave Norfolk, VA 23507	

Proud Supporter of the Arts

cleaners
Albano
 "We Keep You Looking Good"

Bring this ad in for
\$2.00 OFF
 Regular Dry Cleaning
 (one per visit)
 7-1-10

We Keep the Stars Shining!

Locally Owned &
 Family Operated Since 1935



ZEIDERS
AMERICAN
DREAM
THEATER



WHERE CREATIVITY
MEETS OPPORTUNITY

**NEW PLAYS ● NEW MUSICALS ● CABARETS
CONCERTS ● COMEDY ● OPEN MIC**

**LOCATED AT 4573 BANK STREET
VIRGINIA BEACH TOWN CENTER**

(LOCATED ACROSS FROM SANDLER CENTER BOX OFFICE AND NEXT TO MCCORMICK AND SCHMICK'S)

AMERICANDREAMTHEATER.ORG



33rd SEASON * 2016 - 2017



SCHOOL OF ROCK ~ OCTOBER 2016
HURRAH FOR THE HOLIDAYS ~ DECEMBER 2016
BEST CHRISTMAS PAGEANT EVER ~ DECEMBER 2016
THE GLORY OF GOSPEL ~ FEBRUARY 2017
DISNEY'S ALADDIN ~ MARCH 2017
HOW I BECAME A PIRATE ~ MAY 2017
GREASE ~ JULY 2017
PINKALICIOUS ~ AUGUST 2017

VSC EDUCATION AND COMMUNITY ENGAGEMENT PROGRAMS

OUR TEACHING PHILOSOPHY:

We've witnessed firsthand what the creative process nurtures in children, teens, and all lifelong learners:

- Excitement, enthusiasm, and openness to explore their own creativity
- Critical-thinking and problem solving skills
- Enthusiasm for teamwork
- Empathy and support toward peers
- Strength in their ability to listen and express themselves effectively
- Healthy self-image and awareness

Because it has such positive and far-reaching outcomes for our students, Virginia Stage Company's education model emphasizes process over product. We believe that everyone will emerge from their time with our educational programs with skills that will serve them well in all areas of life.

BENEFITS FOR STUDENTS:

Students enrolled in our education programs will:

- develop leadership qualities
- enhance communication skills
- develop an appreciation for the creative process
- learn to take ownership of their own ideas and concepts
- increase their knowledge of theatre terms
- develop greater confidence through the creative play experience
- develop a spirit of curiosity
- learn to develop and appreciate the value of kindness
- develop or expand spatial awareness
- use dramatic prompts to create imaginative movement
- cooperate with others in group sessions
- learn how to use their voices safely and effectively
- learn how to use their bodies effectively with character development
- work with peers to write scripts
- explore characters and settings
- rehearse in a positive, supportive environment
- practice respectful critique of others' work, and
- put it all together to create original theatre for others.

For more information visit vastage.org/education.



VIRGINIA STAGE COMPANY

EDUCATION & COMMUNITY ENGAGEMENT

2016-2017 PROGRAMS

Student Matinees: *I Sing the Rising Sea, Oliver Twist, A Christmas Carol, A Streetcar Named Desire, and The Wiz*

- In-school touring productions: *The Selfish Giant, A.O.K The 'Acts of Kindness' Game Show, & Meet Mark Twain*
- In-school residencies
- VSC Family Saturdays
- Masterclasses
- After school residencies
- Girl Scout Day
- Black Light Puppet Theatre
- Teacher | Student Nights
- Urban Theater Project

We can custom-design workshops to meet your specific lesson needs and SOL requirements: Careers in Theatre Arts, Improvisation, Stage Combat, Shakespeare for Young Actors, and Theatre Games to increase group cooperation are just a few of our many options.

Follow the Education Artists on Twitter @VSCEducates.

WE LOVE

the Gym  DOWNTOWN

BRING IN THIS AD FOR A
ONE DAY FREE TRIAL!

259 GRANBY ST #200, NORFOLK, VA 23510



INTRODUCING THE
2017-2018
VIRGINIA OPERA SEASON

*“Love that is not
Madness is not
love”*

SEPTEMBER - OCTOBER 2017

CAMILLE SAINT-SAËNS

SAMSON AND DELILAH

FRENCH WITH ENGLISH SUPERTITLES



NOVEMBER - DECEMBER 2017

GIACOMO PUCCINI

THE GIRL OF THE GOLDEN WEST

ITALIAN WITH ENGLISH SUPERTITLES



FEBRUARY 2018

BENJAMIN BRITTEN

A MIDSUMMER NIGHT'S DREAM

ENGLISH WITH ENGLISH SUPERTITLES



MARCH - APRIL 2018

GAETANO DONIZETTI

LUCIA DI LAMMERMOOR

ITALIAN WITH ENGLISH SUPERTITLES



SEASON TICKETS TO ALL 4 START AT JUST \$71

FOR PERSONAL ASSISTANCE CONTACT THE VIRGINIA OPERA BOX OFFICE AT

866.673.7282 OR ONLINE AT **VAOPERA.ORG**

VIRGINIA IS FOR LOVERS

VIRGINIA IS FOR
OPERA LOVERS



THE NEW JOURNAL AND GUIDE

Proud Media Sponsor
For

**VIRGINIA
STAGE
COMPANY'S**
Production of
"THE WIZ"



NJG

New
Journal
& Guide
Norfolk, Virginia
Publishing Since 1900



VIRGINIA
STAGE
COMPANY
AT THE
Wells Theatre

THE NEW JOURNAL AND GUIDE

Virginia's Oldest African American Press

...a part since 1900 of what makes Norfolk great

SUBSCRIBE IN 2017



Preferred Payroll Partner of Virginia Stage



**COMMONWEALTH
PAYROLL**

757.714.6959
commonwealthpayroll.net

Leap into our new season!

**TODD
ROSENBLIEM**



Virginia Ballet Theatre

Todd Rosenlieb Dance and Virginia Ballet Theater

TRDance Center 757.626.3262 www.trdance.org

325 Granby St. Norfolk, VA 23510

Follow Us:

BOARD OF TRUSTEES

SARAH B. CLARKSON, M.D.
President

BARRY POLLARA
Vice President

LYNN COBB
Vice President, Development

ANN B. BROGAN
Vice President Strategic Planning,
Secretary

COLIN BARTON
Vice President Finance, Treasurer

CHRISTINA GOODE
Vice President, Development

Carole Aitken
Michael E. Askew
Thomas M. Botts
Xandra L. Burnette
Barbara C. Carroll
Cathy Coleman
Lauren L. Conner
Audrey Douglas-Cooke
Neil Daboul
Betty H. Edwards
Susan Einhorn
Leslie H. Friedman

Steve Fuschetti
Jan Goldrich
Verne't D. Hatcher
Rob Henson
Jackie King
Tyler Leinbach
Linda H. Lilly
Lin Miller
Scott F. Reed, MD
Audrey Settle
Ann P. Stokes
Eugene Winston

ADVISORY COUNCIL

Robert E. Brown
Philip E. Campbell
Beth Diamonstein
Marynell R. Gordon
Stephan H. Gordon
Henry U. Harris
Norman Hoffmann

Carroll Godwin Frohman
Thomas G. Johnson, III
Charles V. McPhillips
William L. Rueger
John M. Ryan, Jr.
Nancy Ryan
Edward W. Ware, III

James Washington
Emily Washington
Lawrence E. Waters
Beth Williams
Rolf A. Williams
Arlene B. Wright

PAST PRESIDENTS OF VIRGINIA STAGE COMPANY

ROBERT E. BROWN, 1974-1981 FOUNDING PRESIDENT

PAMELA D. ETHERIDGE, 1981-1983
STEPHEN C. LAMPL, 1984-1986
JOHN R. TURBYFIL, 1986-1988
NANCY MOORE STANLEY, 1988-1990
DONALD E. CHAPMAN, 1990-1992
SIDNEY N. ASKEW, JR., 1992-1995
A. W. VANDERMEER, JR., 1995-1996
DENVER F. HICKS, 1996-1998
PATRICK M. BARBERICH, 1998-1999

MICHAEL B. DIVARIS, 1999-2001
PHILIP E. CAMPBELL, 2001-2003
CHARLES V. MCPHILLIPS, 2003-2005
BARRY POLLARA, 2005-2007
THOMAS M. BOTTS, 2007-2009
BETTY H. EDWARDS, 2009-2011
STEVE FUSCHETTI, 2011-2013
TYLER LEINBACH, 2013-2015

When it's not on stage,
it's on WHRO.



WHRO TV-15 | WHRO World | WHRO Create
WHRO 90.3 FM | WHRV 89.5 FM | whro.org

**whro**
PUBLIC MEDIA

CORPORATE AND FOUNDATION SUPPORT

VIRGINIA STAGE COMPANY GRATEFULLY ACKNOWLEDGES THE LEADERSHIP AND SUPPORT OF OUR SPONSORS:

DIRECTOR'S CIRCLE



Hampton Roads
Community Foundation
SPECIAL FUND #6

BUSINESS
CONSORTIUM
FOR ARTS
SUPPORT



THE PATRICIA AND DOUGLAS PERRY FOUNDATION
THE BATTEN EDUCATIONAL ACHIEVEMENT FUND
OF THE HAMPTON ROADS COMMUNITY FOUNDATION

THEATRE CIRCLE



Hampton Roads
Community Foundation
SPECIAL FUND #4

THE SHUBERT
FOUNDATION INC.

LEADERSHIP CIRCLE



CAPITAL
GROUP
CHARITABLE
FOUNDATION



Cherry Bekaert^{LLP}
CPAs & Advisors

The Dalis Foundation



BEKIND
KOHL'S KIND KIDS .COM



SEVACE
SOUTHEAST VIRGINIA COMMUNITY FOUNDATION

FRANKLIN SOUTHAMPTON CHARITIES
HELEN G. GIFFORD FOUNDATION

CENTER STAGE CIRCLE



Newport News Shipbuilding
A Division of Huntington Ingalls Industries



NORFOLK SERTOMA



E.K. SLOANE FUND OF THE HAMPTON ROADS COMMUNITY FOUNDATION
THE JAMES PERKINS TRUST



Proud supporter
of the Arts

Parties of 4 to 400,
your place or ours!

757-486-0035
Matt@enjoybite.com

enjoybite.com

VSC STAFF

ARTISTIC

Producing Artistic Director Tom Quaintance
Associate Producer Patrick Mullins
Artistic Director Emeritus Chris Hanna
Resident Dramaturg Kat Martin

BOX OFFICE

Box Office Manager Kristin Shapiro
Patron Services Coordinator Roxanne Kehr
Group Sales Coordinator Kenya Battle

COMMUNICATIONS

Director of Marketing Brad Tuggle
Graphic Designer & Social Media Crystal Tuxhorn
Marketing Associate Connor Norton
Photographer/AV Designer Samuel W. Flint

COSTUMES

Costume Shop Manager Jeni Schaefer
Cutter/Draper Meg Murray
Wardrobe Intern Brittany Lamb

DONOR RELATIONS

Development Manager Melissa Day

EDUCATION & ENGAGEMENT

Dir. of Education &
Community Engagement Ron Newman
Education Coordinator Emel Ertugrul
Resident Theatre Artist Ryan Clemens
Resident Theatre Artist Kat Martin
Resident Theatre Artist, Playwright, &
Tour Designer Grace Davis
Resident Theatre Artist Jenny deJaeger
Education Intern Kai Canu

GENERAL ADMINISTRATION

Production Manager Carolyn Thatcher
Accounting Manager Karen Dzapinka
Accountant Cathi Brumfield-McGhee
Company Manager Connor Norton

LIGHTING

Master Electrician Akin Ritchie
Electrics Apprentice Denisse Chavez

PROPERTIES

Properties Manager Samuel W. Flint

SCENERY

Technical Director &
Facilities Manager Simon Levy
Master Carpenter Megan Navia
Carpentry Interns Adrienne Miranda
Ed Hilton

STAGE MANAGEMENT

Production Stage Manager Matthew G. Marholin

Want to learn more about our Staff?

Visit vastage.org/blog and read the Staff Spotlights posted throughout the season.



Great. Big. Graphics.

SpeedPro Imaging

Great. Big. Graphics.

757-390-2644 • SpeedProNorfolk.com

Vehicle Wraps
Tradeshow Displays
Banners
Event Graphics



CAPITAL
GROUP®

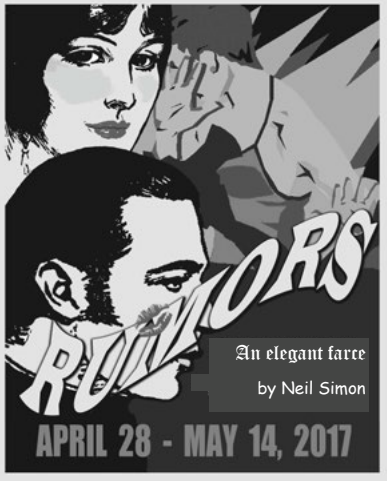


**Give them
a hand!**

We applaud Virginia Stage Company for its commitment to enrich, educate, entertain the region by creating and producing theatrical art of the highest quality. Thanks to all the volunteers, including our associates, who contribute their time and energy to support this important work.

thecapitalgroup.com

Peninsula Community Theatre presents:



An elegant farce
by Neil Simon

APRIL 28 - MAY 14, 2017

Just go to pctlive.org to select and purchase your own seats!

10251 Warwick Blvd., Newport News, VA 23601
In lovely Hilton Village!



**Carolina
Cupcakery**

Hampton Roads Original Cupcakery

STILL in Norfolk at The Skinny Dip Ghent



COMING SOON to Waterside Live

351-1548 CarolinaCupcakery.com

NEW, IMPROVED & TOTALLY DECKED OUT

Come see what's new aboard the fully renovated Spirit of Norfolk.



Outdoor Games | Lounge Spaces | Reimagined Experience | Wine-Down Wednesdays
Gospel Dinners | Silver Series Lunches | Jazz Brunches | Holiday Parties & More

SPIRIT
OF NORFOLK

Cruising year-round from downtown Norfolk.

SpiritofNorfolk.com
866.445.9283

COMING UP AT THE WELLS THEATRE!
**REDUCED SHAKESPEARE
COMPANY**

William Shakespeare's Long Lost First Play (abridged)

The hit of the 2016 Edinburgh Fringe! This no-holds-Bard show is witty, goofy fun for all ages, whether you're a Shakespeare scholar or never cracked a couplet. "A romp of epic proportions...fast, outrageous fun!" (*Edinburgh Guide*).

FRIDAY, MAY 26, 8 PM

SATURDAY, MAY 27, 8 PM

SUNDAY, MAY 28, 3 PM

WELLS THEATRE, NORFOLK

Co-presented with



**VIRGINIA
STAGE
COMPANY**
at the Wells Theatre



TICKETS: VAFEST.ORG OR CALL 757-282-2822
FESTIVAL BOX OFFICE: 440 BANK STREET, NORFOLK.
GROUPS SAVE! CALL 757-282-2819 FOR DETAILS.

VSC SENIOR STAFF BIOS

TOM QUAINANCE (Producing Artistic Director) comes to Virginia Stage Company from Cape Fear Regional Theatre (CFRT) where he produced over 35 plays and directed the World Premiere of *Downrange: Voices from the Homefront*, a play based on interviews with military spouses from Fort Bragg. At CFRT, Tom also directed *Henry V*, *Man of La Mancha*, *Amadeus* (with the Fayetteville Symphony Orchestra), *Spamalot*, *Return to the Forbidden Planet*, *The Santaland Diaries*, *Sweeney Todd*, *The Little Prince*, *Pride & Prejudice*, *A Midsummer Night's Dream* (also with the FSO), *Jesus Christ Superstar*, *On Golden Pond*, *Othello*, *The Best Christmas Pageant Ever*, and *Hairspray*. Tom is an Associate Artist at PlayMakers Repertory Company in Chapel Hill where he directed *An Enemy of the People*, *Shipwrecked! An Entertainment*, *The Life and Adventures of Nicholas Nickleby*, and *The Little Prince*. He also directed *The Little Prince* at the 2007 Edinburgh Fringe Festival. As the founder of FreightTrain Shakespeare in Los Angeles, he earned a Dramalogue Award for his direction of *Pericles*. Other Los Angeles credits range from *King Lear* to *The Devil With Boobs*. A member of the Stage Directors and Choreographers Society, Tom is a graduate of Wesleyan University (Middletown, CT) with a B.A. in Theatre and Economics, and the University of California, San Diego MFA directing program, where he was the assistant director on the original production of *The Who's Tommy*. Tom and his wife Wallis are the proud parents of Mireille Julia and Annika Christine.

MELISSA DAY (Development Manager) is excited to begin her second season at Virginia Stage Company, where she started as the Development Associate and Capital Campaign Coordinator and just recently transitioned into her new role as Development Manager. Before working at Virginia Stage Company, she spent several years volunteer fundraising and event coordinating. She has a Bachelor of Science in Social Science and Business Management, as well as a Master of Science in Nonprofit Management. When not at work, Melissa enjoys spending time on fun activities with her husband and their two sons.

RON NEWMAN (Director of Education and Community Engagement) has been a theatre educator for nearly 40 years, and has made it his life's mission to create and foster innovative cross curricular arts education programming. He holds an MS in Education from Old Dominion University and did his theatre graduate studies at the University of Delaware and American University. His actual career path began at the age of 5, designing and creating neighborhood backyard plays with friends; Saturday mornings were all about reenacting 'Our Gang' productions and heroic adventures. Ron loves gardening, bon fires, sipping wine on the dock, and collecting Disney. Ron has adapted and directed more than 30 classic children's literary works for the stage including *Alice in Wonderland*, *The Wizard of Oz*, *The Pied Piper*, *Aesop's Fables*, *The Adventures of Tom Sawyer*, and *The Selfish Giant*. Aside from writing and directing he has performed in over fifty productions, including the East Coast tour of Marlo Thomas' *Free To Be...You and Me*, and as been seen locally with Virginia Musical Theater, The Generic Theater, and in Virginia Stage's production of *The Diary of Anne Frank*.

CAROLYN THATCHER (Production Manager) is thrilled to conclude her ninth season at Virginia Stage Company. While a native Hoosier, she has made her home here in Norfolk, Virginia. She has been known to work for several venues and organizations in the area such as the Virginia Arts Festival, The Sandler Center for the Performing Arts, Little Theatre of Norfolk, and Stage Right Lighting as a freelance lighting technician and designer. She is excited to begin her tenure as Production Manager for Virginia Stage Company and is thankful to her family and the staff for their continuing support.

BRAD TUGGLE (Director of Marketing) comes to Virginia Stage Company with 10 years of experience in theatre and arts management. As a manager, he has done stints with Yale Repertory Theatre, Virginia Rep, SPARC and the I-Park Foundation, and has worked on multiple world premieres including *Pop!*, *Compulsion* and *Austin's Bridge*. In the

(Continued on page 43)



It's time for some

Southern Charm

at the Spring Plant Sale

DON'T MISS IT!
Mother's Day Weekend
Fri, Sat, Sun • May 12, 13, 14
10am-5pm

NORFOLK BOTANICAL GARDEN



6700 Azalea Garden Road
Norfolk, VA 23518
757-441-5830
IdigNBG.org

VSC SENIOR STAFF BIOS (CONTINUED)

room, Brad most frequently works as a director, but has also acted, stage managed, designed lights, and written for more than a dozen companies. He currently serves on the WHRO Emerging Leaders Board, Norfolk's Downtown 100, and on the board of Puppets Off Broad Street in Richmond.

Step out of your kitchen and into ours.

Distinctive California-style pizzas.
Creative salads, pastas, and entrées.
Stop by to add some originality to your next meal.



california
PIZZA KITCHEN

MacArthur Center
300 Monticello Avenue
757.622.7190

Free valet parking with \$10 purchase.

*Dine-in, Take-out, Curbside Service,
Catering and Online Ordering Available*

cpk.com   

Brick Anchor Brew-House

Proud supporters of the Virginia Stage Company

**Serving your before and after show
food & beverage needs just a few
steps away at the corner of
Tazewell and Granby**

10% OFF
your food order

*When you bring in your ticket**

**Only valid on the date of the performance*



CONTRIBUTORS

DIRECTOR'S CIRCLE (\$50,000+)

Businesses & Foundations

Batten Educational Achievement Fund
of the Hampton Roads Community
Foundation
Business Consortium
for Arts Support
Dollar Tree Stores, Inc.
Anonymous Foundation of the
Hampton Roads Community
Foundation
Norfolk Southern
Atlantic Dominion Distributors/
Hoffman Beverages
Bank of America
Patricia and Douglas Perry
Foundation
Birdsong Corporation
Dixon Hughes Goodman
Kaufman & Canoles
Virginia Natural Gas, INC.
Wells Fargo Foundation
Wilbanks, Smith and Thomas
Asset Management, LLC
Willcox & Savage, P.C.
Davenport & Company, LLC
The Dragas Companies
Fulton Bank
Haynes Furniture Company, INC
O'Connor Brewing Company
Palladium Registered Investment
Advisors
Southeast Virginia Community
Foundation
Southern Bank
The Virginian-Pilot
Williams Mullen
Grow
Hunton & Williams
City of Norfolk
The Goode Family Foundation
The Hampton Roads Community
Foundation
Harbor Group
City of Norfolk Commission on the
Arts & Humanities
Norfolk Southern Foundation
Patricia & Douglas Perry Foundation
Virginia Commission for the Arts

THEATRE CIRCLE (\$25,000+)

Individuals

Robert Brown
Special Fund #4 of the Hampton
Roads Community Foundation
Barry & Peggy Pollara

Businesses & Foundations

The Capital Group Companies
Charitable Foundation

LEADERSHIP CIRCLE (\$10,000+)

Individuals

Thomas & Nancy Botts
David & Susan Goode
Drs. Sarah B. Clarkson & John Herra
44

Penny & Peter Meredith

Businesses & Foundations

Agena Foundation
Children's Hospital of the King's
Daughters
Fannie, Milton and Leslie Friedman
Foundation
Franklin Southampton Charities
Helen G. Gifford Foundation

CENTER STAGE (\$5,000+)

Individuals

Colin Barton
David R. Goode Charitable Lead
Annuity Trust
Mr. Leslie H. Friedman
Eleanor & Sandy Harris
Norman & Sue Hoffman
Ted Kaufman
Tyler & Sunshine Leinbach
Ernest & Etta Lendman
Charles & Bonnie Moorman
Susanne Mozley & Randy Wisswell
C. Arthur & Shirley Robinson
Louis & Prudence Ryan
Anthony Vittone

Businesses & Foundations

Chesapeake Fine Arts Commission
LifeNet Health
Newport News Arts Commission
Portsmouth Museum & Fine Arts
Commission
Theater Communications Group
Sertoma Club of Norfolk
Virginia Beach Arts and Humanities
Commission
Virginia Stage Associates
Wells Fargo Foundation

WELLS SOCIETY (\$2,500+)

Individuals

Patrick & Ann Brogan
Brent & Xandra Burnette
Jim & Barbara Carroll
Cathy Coleman
Mr. & Mrs. Alexander Conner
Audrey Douglas-Cooke
Betty Harmon Edwards
Steve & Nancy Fuschetti
Lawrence & Jan Goldrich
Christina Goode
Franklin L. Greene, Jr.
Verne't Hatcher
James & Rachel Jiral
Robert & Kristi Jones
Dr. & Mrs. Donald Lipskis
The Honorable & Mrs. Norman Olitsky
Mr. Kevin & Dr. Giniene Pirkle
Drs. Lelia & Greg Reck, Ph.D.
Drs. Scott & Sharon Reed
Lynn Cobb & Warren Richard
John & Audrey Settle
Mr. & Mrs. John S. Shannon
Eugene & Brenda Winston
PATRON (\$1,000+)

Individuals

MD
Mike & Michelle Askew
George & Anne Aspatore
Clay H. Barr
Dr. & Mrs. J. Sumner & Susan Bell
Norman & Bernadette Carrick
Leroy & Cora Collins

Mr. & Mrs. Neil A. Daboul
Bess Decker
Tom Nicholson & Christie Dixon
Dianne Epplein & John Patton
Maria T. & Brian H. Fallin
Mrs. Juanita G. Felton
Mrs. Harry Fleder
Mr. & Mrs. David C. Fuller
Ted W. Gardner
Dennis & Margaret Gartman
Barbara Gornto
Paul & Carolyn Gottlieb
Jacquelyn Hearst
Susan & Paul Hirschbiel
Martha G. Hirstenstine
Michael & Gene Hubbard
Ms. Gayle Johnson
Mrs. June-Marie Lam
Gill & Stephen Leaman
H. L. & Jane Marks, Ph.D.
Estate of Elizabeth A. Marshall
RADM Peter Marshall & Diane
Horowitz
Dr. & Mrs. Edward Lilly
Peter & Courtney Martone
Mr. & Mrs. Colin M. McKinnon
Oriana McKinnon
Richard Miller
Mr. & Mrs. W. Shep Miller III
Robert L. Mills
W. Reynolds & Diane J.A. Monach
James Dean Perry
Charles & Lucy Quaintance
Mr. & Mrs. Richard V. Reynolds
Meredith & Cindy Rose
Francie & Brett Siegfried
CAPT & Mrs. Douglas M. Simon
Mr. & Mrs. George Staudter
Mr. Lawrence L. Steingold
Franklin and Ilene Swartz
Alf & LARRY Waters
John & Kate Turbyfill
Jane & Larry Waters
Bruce & Holly Weber
Mr. & Mrs. Samuel J. Webster
Doug & Janis Wood
Deborah & John Wylly

Businesses & Foundations

The Ensemble Studio Theatre/Alfred P.
Sloan Foundation
Visualzen
Morgan Stanley
Norfolk Rotary Club
Rouse-Bottom Foundation
Southeast Virginia Community
Foundation
Tidewater Jewish Foundation
Warden Family Foundation

ENSEMBLE (\$500+)

Individuals

Helen & Warren Aleck
Ms. Elena Baum
Donna Bausch
Mr. William C. Bell
Anonymous
Bruce T. & Sarah Bishop
Dr. & Mrs. John T. Bowers III
Jared & Whitney Brooks
Gerard and Linda Brunick
Dr. James L. Cox, Jr.
Greg & Carrie Cutter
In memory of Susie Davis
Scott & Christina Duncan
Marty Einhorn, In Honor of Susan
Einhorn

CONTRIBUTORS

Mr. & Mrs. Joel & Gail Flax
 Carroll G. Frohman
 In Honor of Joan M. Geller
 Harold Goode
 Stephan & Marynell Gordon
 John F. Griffing
 Dwight & Susan Handforth
 Henry and Mary Jeanne Harris
 Charitable Trust
 Caroline Herre
 Denver F. Hicks
 Patty & Tom Hostutler
 T. Hubbard & Christy Hamlin
 H. Blount Hunter III
 Dr. & Mrs. Bernard Jamison
 Heather Jordan
 Kathy & Ed Keil
 Amanda M. Loessin
 James & Kathryn Markey
 Eleanor J. Marshall
 Dr. & Mrs. Mayes D. Mathews
 Drs. Kurt & Carol McCammon
 Steven & Karen McCurdy
 Hope Mihalap
 Siobhan Miller
 Sale & Susan Oller
 Richard G. Parise
 Harry & Edrie Pfeiffer
 Dr. & Mrs. Ivan R. Schiff
 Dr. & Mrs. Robert Seeherman
 Foy Shaw
 Win & Jane Short
 Dr. and Mrs. Michael Shroyer
 Conrad & Anne Shumadine
 Carroll & Jackie Smith
 David & Becky Sterling
 Brad & Suzanne Stillman
 Pat & Mary Ann Thomas
 James & Emily Washington
 William & Christine Westendorf
 Clyde Wilcox In Memory of Karen
 Lousie Wilcox

Teresa L. Williams
 Ken & Melanie Wills
 Dr. Holly Puritz & Dr. Stephen
 Wohlgemuth
 Kenneth and Linda Woods
 Byron & Chris Work

Businesses & Foundations
 Alan & Esther Fleder Foundation

APPLAUSE (\$250+)

Individuals

Leonette & Beryl Adler
 John & Gladys Allen
 June & Richard Austin
 Stanley G. Barr, Jr
 Meg & Mickey Bisese
 Ronald L. & Barbara H. Buck
 Dr. Jeanne Burger
 Elisabeth & Charles Burgess
 Charlotte & Joe Carriker
 Andrea S. Clontz
 Raymond DeFrank
 John & Carol Duckett
 Lois & Barry Einhorn
 Dr. Ed George
 Mr. & Mrs. Edward J. Grant
 Bill & Janice Gregory
 In Memory of Dr. William F. Hale
 Richard & Leslie Hildreth
 Adrienne & John Hilt
 Dr. & Mrs. Edwin B. Hodge
 Judy Homsher
 Dr. Sylvia C. Hudgins
 Hon. & Mrs. Marc Jacobson
 Constance and Calvin Jones in
 memory of Cheryl Lyall
 Farouk & Deborah Kassir
 Doris & Virgil Kocher
 Stanley & Jean Lamkin
 Nancy Levin

Ina Levy
 Mr. and Mrs. Duane Lougee
 James & Shelley Marrion
 Mr & Mrs. William A. Messner
 Jonathan Miller & Barbara Chapman
 Mr. & Mrs. Ray Moses
 Carol Westerfield Naumann
 Mrs. Daryl Nemo
 Dr. & Mrs. Gunther Oberlechner
 Mr. & Mrs. Wayne and Marie Old
 Vincent & Patricia Olivieri
 Alfred Ponce & Alice Clay
 Mrs. Robin N. Reeves
 Iva Robinett
 Iva & Bill Robinett
 Ms. Elizabeth Ross
 Dennis & Susie Rowley
 Stanley & Linda Samuels
 Tyler & Mary Beth Sherwin
 Sandra & Bradley Simpson
 Christopher & Angela Sinesi
 Larry & Greta Stallings
 Gus & Janet Stuhlfreyer
 Dr. Jane Sullivan
 Dora Lee Taylor & Jeffry Davidson
 Bill & Neola Waller
 Dr. & Mrs. W.B. Warden
 Eleanor & Henry Watts
 Edward & Janus Weisberg
 Mrs. Carol A. Winarski

Businesses & Foundations
 York County Arts Commission

Please note this listing reflects gifts of \$250 or more between July 1, 2016 and March 23, 2017. If there are any errors in your listing or to donate, please contact Melissa Day at 757.627.6988x315 or go to vastage.org/donate.



TODD JURICH'S bistro

150 West Main Street, Norfolk, VA 23510 - (757) 622-3210
FREE VALET PARKING when you show us your VSC theater ticket

Every Dish was Excellent and Many were Revelatory

- Dan Rather-CBS News

The Perfect Virginia Wine Dinner

- Bobby Flay-Chef

Jurich is a Wizard with Eastern Shore Shellfish and the Wine List was Exemplary

- R.W Apple Jr.-New York Times

A Hidden Gem....Mashed Potatoes to Die For

- Donald Sutherland-Actor

The Most Ambitious on Norfolk's Chef Owned Restaurants

- Frank Rose-Travel & Leisure

Jurich Raises the Bar with Sparkling New Cuisine

- Wine Enthusiasts

ARTS. *re-imagined.*

Pacesetter

Dollar Tree Stores, Inc.

Foundation (anonymous)

Hampton Roads Community
Foundation

Norfolk Southern Foundation

Champion

Atlantic Dominion Distributors
/Hoffman Beverage

Bank of America

Patricia & Douglas Perry
Foundation

Leader

Birdsong Corporation

Dixon Hughes Goodman

Kaufman & Canoles

Virginia Natural Gas, Inc

Wells Fargo Foundation

Wilbanks, Smith & Thomas
Asset Management, LLC

Willcox & Savage, P. C.

Advocate

Davenport & Company LLC

The Dragas Companies

Fulton Bank

Haynes Furniture Co, Inc.

Palladium Registered
Investment Advisors

O'Connor Brewing Company

Southeast Virginia Community
Foundation

Southern Bank

The Virginian-Pilot

Williams Mullen

Arts Ally level contributors
at www.bcartsupport.org



Art takes many forms.

Our support helps produce this event, and that's only part of the story. Through project grants and community involvement, we continue to help create and perpetuate a rich and varied arts scene for the future.

Join us. Call us at 757-383-6047 or visit www.bcartsupport.org.

**BUSINESS
CONSORTIUM
FOR ARTS
SUPPORT**





Sheraton
Norfolk Waterside

H O T E L

Proudly Supports
Virginia Stage Company



Norfolk's Only Waterfront Hotel

468 City and Harbor View Guestrooms

Conference and Event Space
(Up to 1000 attendees)

City Dock Waterfront Restaurant

Walking Distance to Granby street Nightlife,
Restaurants and MacArthur Mall

Sheraton Norfolk Waterside Hotel
777 Waterside Drive Norfolk, VA 23510
757-622-6664

Sheraton.com/norfolk



Eric Worden
The Hometown Guy

LOCAL VOICE VIRGINIA BEACH

SOUTHSIDEDAILY.COM
VIRGINIA BEACH - HAMPTON ROADS



Local Voice is a multi-channel local media company connecting the Southside community to news, entertainment and savings through its various channels - SouthsideDaily.com, 102.1 FM The Tide and The Save30 Store. Southside Daily is Hampton Roads' only source of trustworthy, non-editorial local news. We publish all day, every day, at SouthsideDaily.com. You'll hear our local news updates between 6 a.m. and 7 p.m. weekdays on 102.1 FM The Tide, where the music continues 24/7 with a handpicked mix of acoustic, electric, classic and eclectic music you won't hear on any other radio station.

CONNECT WITH US

SOUTHSIDEDAILY.COM • TIDERADIO.COM • SAVE30.COM

Make Your Piggy Bank Happy!

Purchase full-value Gift Certificates to local businesses at a 30% discount.
View, print and use your certificates immediately, without restrictions.



Shop Local. Save Local.

No coupons or slippery offers • No restrictions
Buy one, or many • Use one or more at a time

www.Save30.com

VIRGINIA STAGE ASSOCIATES

Virginia Stage Associates provides volunteer support to Virginia Stage in many ways:

USHERING

Host public performances and student matinees, assist patrons with seating.

HOSPITALITY

Prepare matinee meals and potluck meals for cast and crew.

SPECIAL EVENTS

Assist with a variety of projects designed to raise funds for Virginia Stage Company.

COMMUNITY EVENTS

Raise public awareness of Virginia Stage Company at art shows and other events.

For more information, please call Carole Aitken at (757) 474-1822 or email carolemaitken@gmail.com.

2016–2017 EXECUTIVE BOARD

Carole Aitken President
Dean Perry President Elect
Lar Stampe Vice President
Janet Kane Treasurer
Sue Lonigan Secretary
Lorenz Connelly Member at Large

ANNUAL MEMBERSHIP

(Contribution covers FY July 1-June 30)
Individual Membership \$25
Family Membership \$40
(two or more in the same household)
Student Membership \$15
(high school or college)

If joining January 1, 2017 or after, membership donations are half the above amount, and will cover January 1-June 30, 2017. The new membership year begins July 1, 2017.

WHAT PART WOULD YOU LIKE TO PLAY?

Best wishes for a successful 38th Season!

Hampton Roads Pride unites the Lesbian, Gay, Bisexual, Transgender (LGBT) and allied communities in support of inclusion, dignity and equality of all people.

HAMPTONROADSPRIDE.ORG

 #HRPRIDE  @HRPRIDEVA  HAMPTONROADSPRIDE #HRPRIDE


HAMPTON
ROADS
PRIDE

Theater has the potential
to enrich our lives like nothing else.
So support, endorse, promote,
and, above all, enjoy the arts.



TOWNE BANK

The Best Bankers. Hometown Banking.

MEMBER FDIC



14K rose and yellow gold moonstone and ruby ear clips
Retro period [circa 1950s] from Hardys estate collection

embracing
the art of jewelry
for 170 years

18K yellow gold moonstone, citrine and fordite brooch
Hardy's collaboration with jewelry designer Alishan



HARDY / S





Proud to support the arts.

